

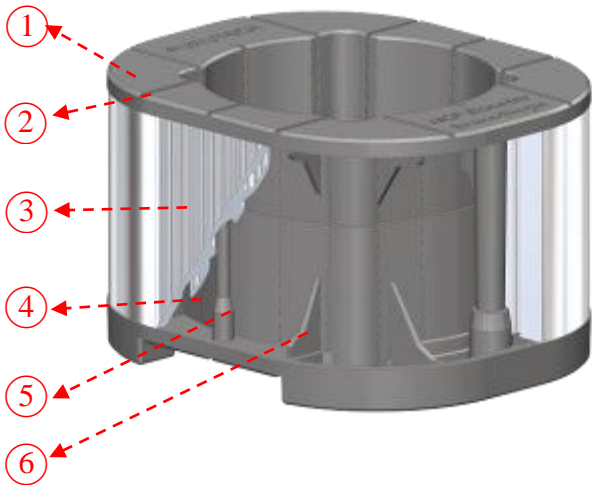


High End Performance
 Connector Support
NCF Booster-Brace-Single

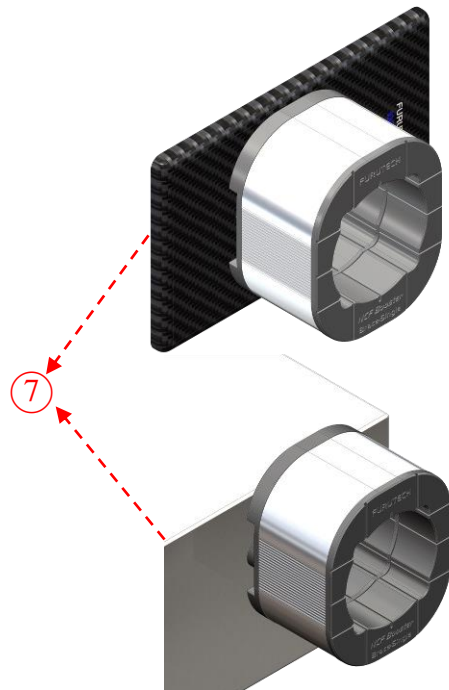
*Multi-material Hybrid Construction – Furutech Original
 Design*

---For the Ultimate Connector Damping Solution

Features and Materials:



Accessories	
=	Special adhesive double-sided tape (2 spare pieces included)



1. **NCF (multi-material hybrid structure):** NCF formulated nylon resin (Body).
2. **Anti-vibration grooves:** suppress surface vibration.
3. **Housing:** Special blasted and anodized aluminum alloy. Internal structure designed to damp resonance and improve sound.

4. **Air chamber:** Internal air pressure suppresses vibration.
5. **Vibration radiating NCF pillar.**
6. **Vibration suppression wall (NCF damping wall):** elimination of resonance.

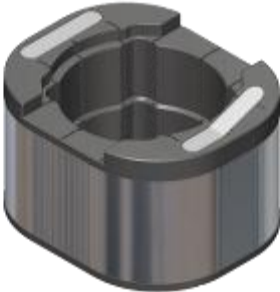
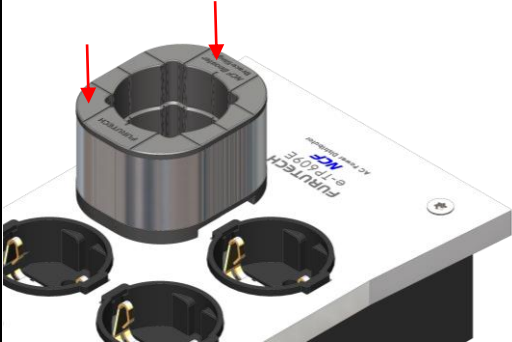
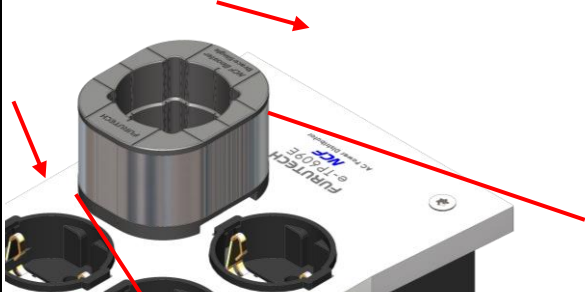
For use at various power connection positions around system: rear of components, power distribution units and single structure wall outlet.

Overall Dimensions: W 54.3 X L 64.8 X H 38.5mm approx.

Net Weight: 67.5g approx.

Attached with special adhesive double-sided tape: strong adhesion with no residual glue.

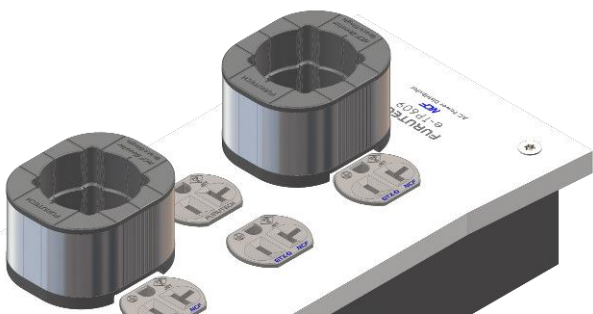
⚠ When installing the NCF Booster-Brace-Single, be sure to unplug the power cord of the power strip from the wall outlet. If installing the NCF Booster-Brace-Single while the power strip is connected to a wall outlet, turn off the main power breaker.

Directions for fixing the position of NCF Booster-Brace-Single (suggested)	
	<p>(When applying new double-sided tape, apply pressure to make sure that it is flat and stable, otherwise, the double-sided tape may come away when peeling off the adhesive tape protective cover)</p> <p>Carefully remove the double-sided adhesive tape adhesive sheet on the bottom.</p>
	<p>Set the NCF Booster-Brace-Single apply pressure (as shown by the red line) to stabilize the body.</p> <p>Positioning of NCF Booster-Brace (body) is completed.</p>
Removal method (suggested)	
	<p>To remove, use dental floss (moving side to side, as shown by the red line) and separate the NCF Booster-Brace-Single from the surface. Clean off any residual glue.</p>

--	--

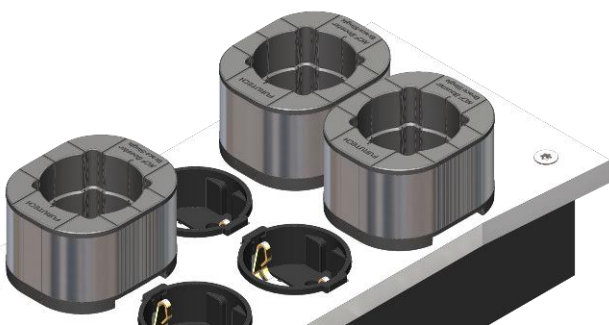
Usage examples for reference

With e-TP609 NCF / e-TP809 NCF



NCF Booster-Brace-Single used on e-TP609 NCF / e-TP809 NCF, set in the direction and intervals as shown on the left.
When using the method shown in the figure, an additional power connector can only be used in the middle socket.

With e-TP609E NCF / e-TP809E NCF



NCF Booster-Brace-Single used on the e-TP609E NCF, set them in the same direction and intervals (as shown on the left).
When used on the e-TP809E NCF, it can support different directions.



Power Distributor



Pre. AMP. & Power AMP back of the equipment AC inlet.

***To replace double-sided tape**
If you need to replace the double-sided tape, please carefully remove the double-sided tape and residual glue. Apply new double-sided tape.