

High End Performance
Shaft Bar Adjuster

(2pcs/set)

for
NCF Booster-Signal
NCF Booster



Nano Crystal² Formula (NCF).

Incorporated into selected Furutech products, NCF features a special crystalline material that has two 'active' properties. First, it generates negative ions that eliminate static. Second, it converts thermal energy into far infrared. Furutech combines this remarkable material with nano-sized ceramic particles and carbon powder for their additional 'piezoelectric effect' damping properties. The resulting Nano Crystal² Formula is the ultimate electrical and mechanical damping material. Created by Furutech, it is found exclusively in Furutech products.

FURUTECH
original design

Hybrid multi-material construction for improved sound quality

Material:

NCF Nylon resin and Ni-plated Brass screw body

Overall Dimensions:

20.0mm diameter X H 42.6mm approx.

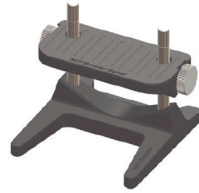
Net Weight:

57g approx. (2pcs/set)



is a registered trademark of Furutech Co., Ltd. Japan

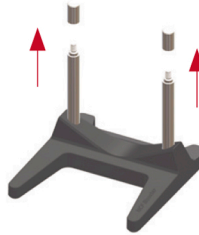
Shaft Bar Adjuster set up process



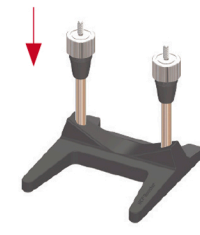
1. Prepare additional Shaft bars for setting on NCF Booster



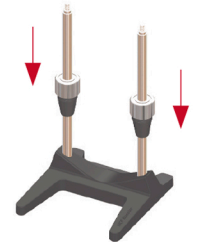
2. Loosen support fixed screws and then remove support unit.



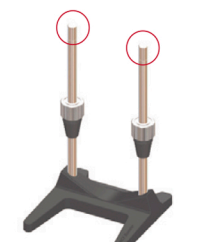
3. Loosen and remove the two caps from the shaft bars.



4. Slide on the Adjusters (no screwing required)



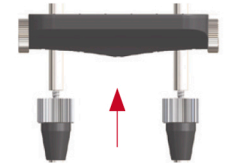
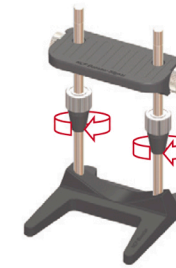
5. Screw on additional shaft bars and caps.



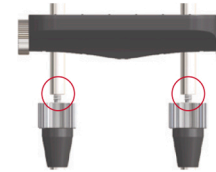
6. Reset the support unit and tighten the fixed screws.



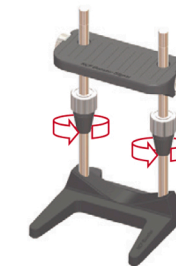
Finished.



Turn the Adjusters clockwise in unison to adjust the height of the Cradle unit.

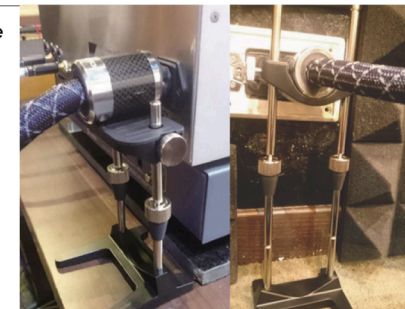


Suggested the adjustment range: **7.0mm Max.**
Over 7.0mm the shaft bar may become separated from Adjuster.



Caution:
The Adjusters should be setup on the base shaft bar. If not, the Shaft bar under the Adjuster, may become loose by turning the Adjuster in a counter-clockwise direction.

Usage examples for reference
Pre. AMP. & Power AMP.
and wall receptacle



※ Set up process is the same for NCF Booster.